

Mastering
Iconic
Building
Spaces

Aurora

Athens
Seaside



.01

Living in Voula where
stunning landscapes
meet urban elegance.
Located in Athens'
luxurious southern
suburbs, Voula
offers the ultimate
cosmopolitan lifestyle
with luxury homes and
seaside apartments.

Aurora the Experience

EXQUISITE DESIGN

- EVERY APARTMENT EXUDES ELEGANCE AND STYLE, SHOWCASING EXCEPTIONAL CRAFTSMANSHIP.

UNPARALLELED QUALITY

- BUILT TO THE HIGHEST QUALITY STANDARDS, EACH RESIDENCE FEATURES SPACIOUS LAYOUTS AND THOUGHTFUL AMENITIES.

BREATHTAKING VIEWS

- ENJOY PANORAMIC VIEWS OF THE SURROUNDING NATURAL BEAUTY FROM THE COMFORT OF YOUR LUXURY HOME.
-



Prime location

1.3KM
VOULA
BEACH

1KM
TRAM
STATION

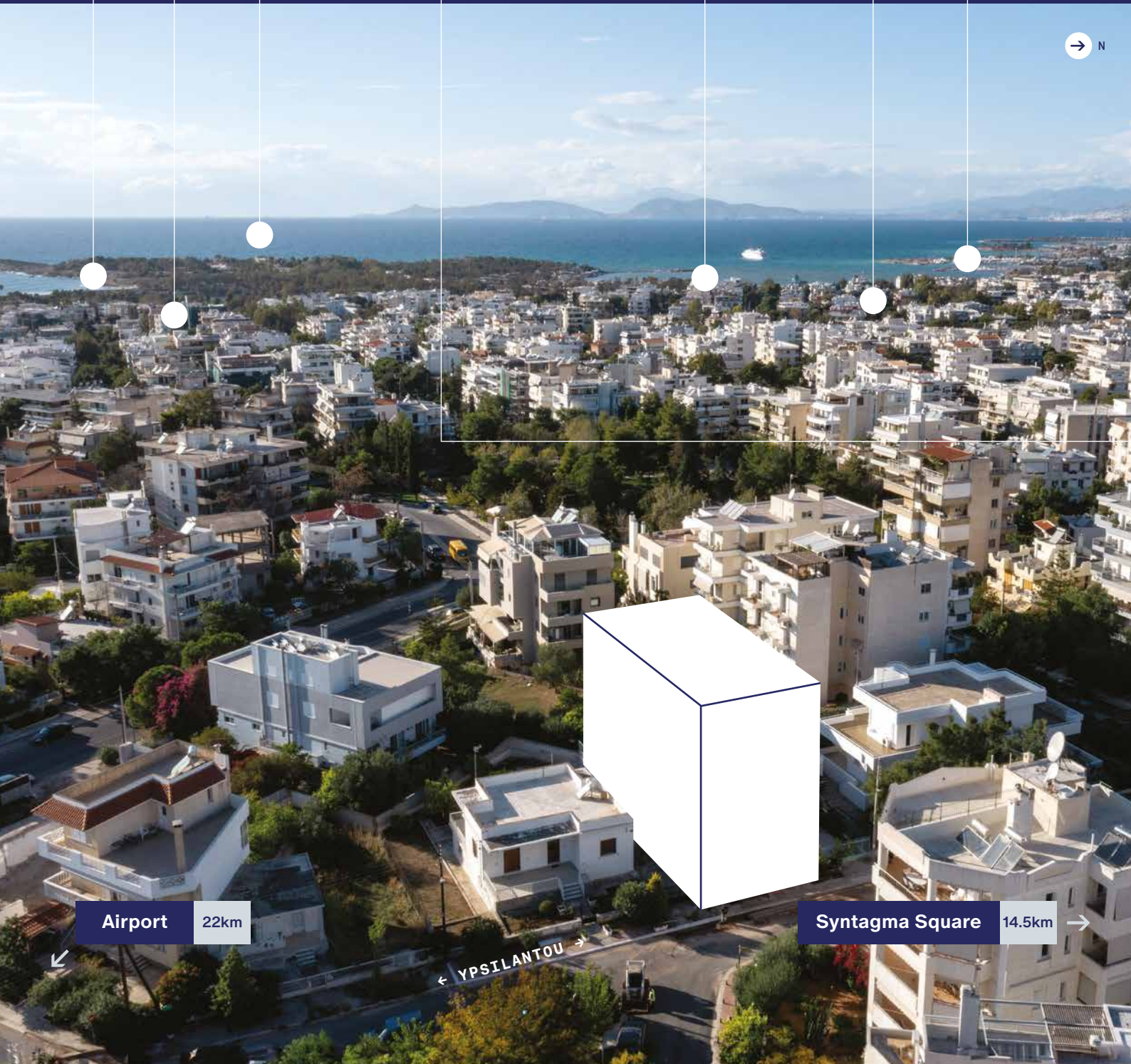
1.3KM
AEGEAN
SEA

3.7KM
THE ELLINIKON
METROPOLITAN PARK

1.5KM
ONE AND ONLY
AESTHESIS 5*
RESORT

1.4KM
GLYFADA
CENTRE

2KM
GLYFADA
MARINA



Airport

22km

Syntagma Square

14.5km



← YPSILANTOU →

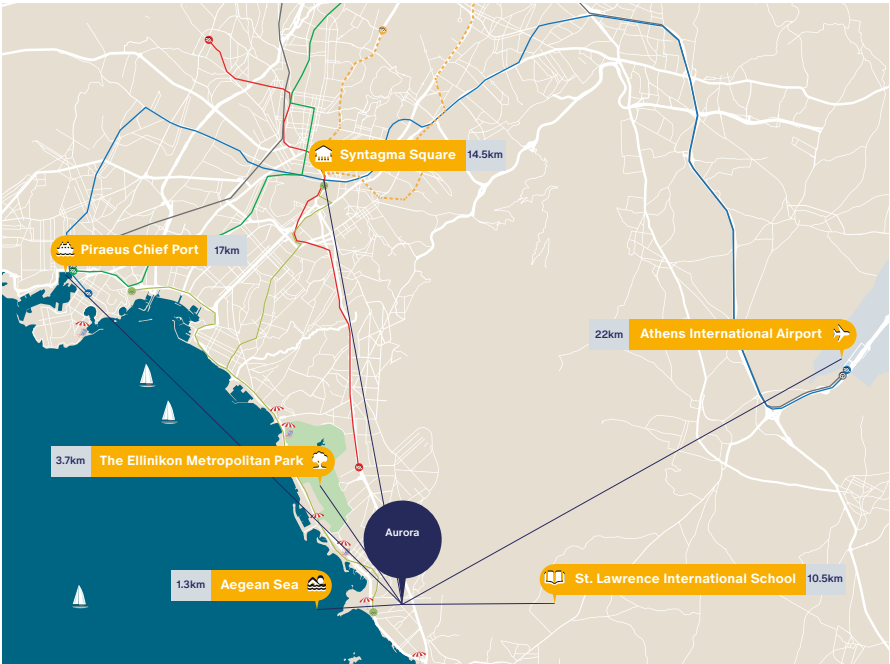
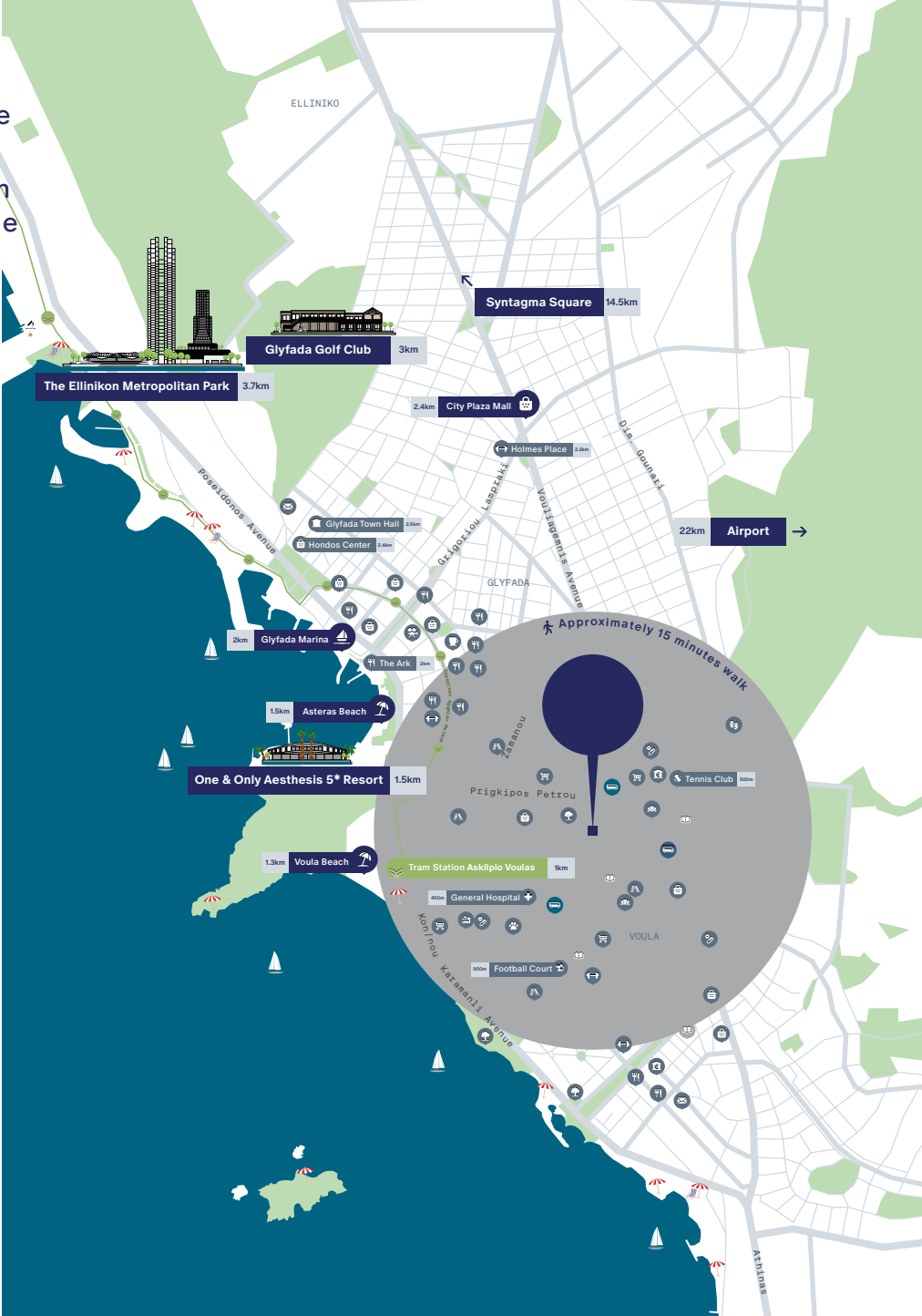
Voula, ideally located near the best beaches and attractions of the Athenian Riviera, a destination where dreams of an idyllic lifestyle come true.

Just a half-hour drive from Athens city center

Stunning beaches

Michelin-starred restaurants

High-end stores





Lower ground, Ground floor and 1st floor



GF1

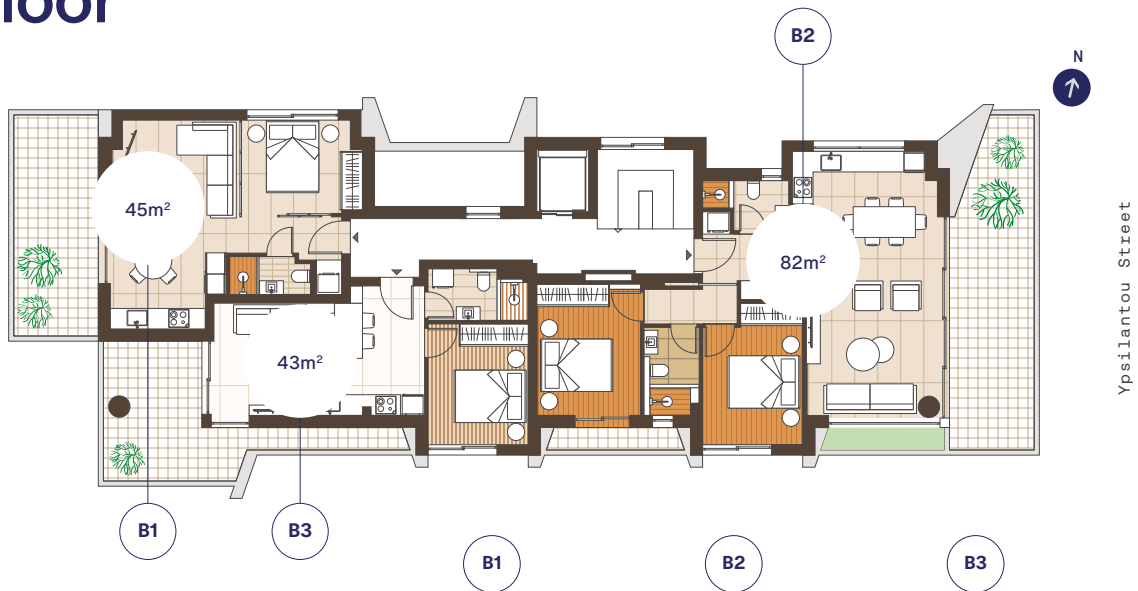
GF2

4 Bed Garden Duplex

3 Bed Garden Duplex

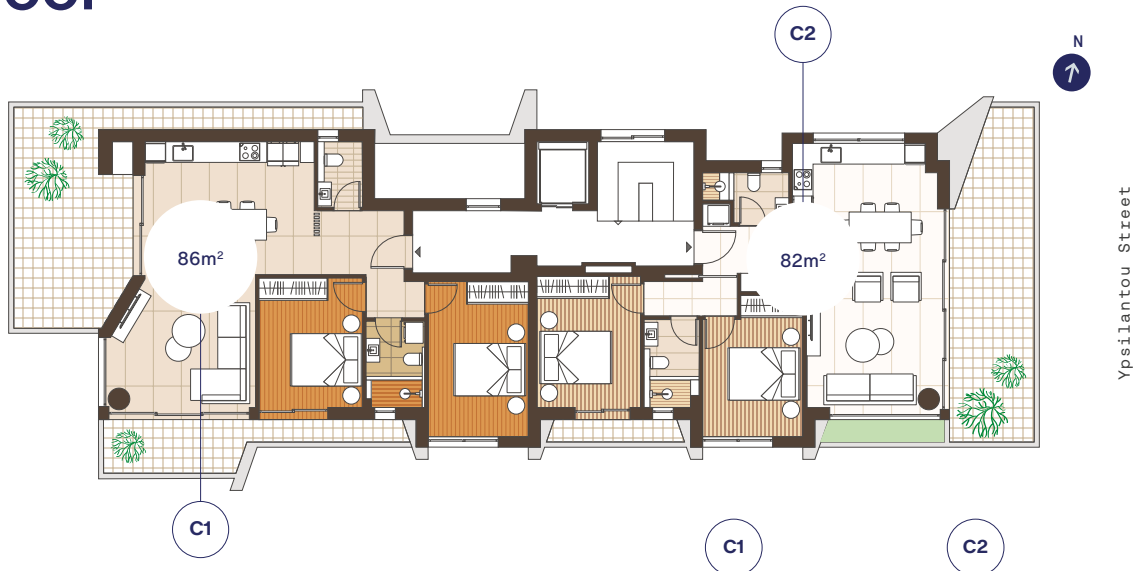
Bedroom	4	3
Bathroom	4 (1WC)	3
Covered Area	181.5m ²	123m ²
Balcony	10m ²	9m ²
Garden	193.5m ²	108m ²
Total Area	385m ²	240m ²

2nd floor



	1 Bedroom Apartment	2 Bedroom Apartment	1 Bedroom Apartment
Bedroom	1	2	1
Bathroom	1	2	1
Covered Area	45m ²	82m ²	43m ²
Balcony	17m ²	26.5m ²	18m ²
Total Area	62m ²	108.5m ²	61m ²

3rd floor



	2 Bedroom Duplex	2 Bedroom Apartment
Bedroom	1	2
Bathroom	2 (1WC)	2
Covered Area	86m ²	82m ²
Balcony	37.5m ²	26.5m ²
Total Area	123.5m ²	108.5m ²

4th floor and 5th floor



DE1

D2

	3 Bedroom Duplex	2 Bedroom Apartment
Bedroom	3	2
Bathroom	3 (1WC)	2
Covered Area	135m ²	82m ²
Balcony	28m ²	26.5m ²
Terrace	72.5m ²	-
Total Area	235.5m²	108.5m²

Unit Summary



.04



Unit	Floor	Type	Beds	Baths	Total Area (m ²)	Covered Area (m ²)	Balcony (m ²)	Garden/ Terrace(m ²)	Pool	Parking & Storage	Price
GF1	LG-1st	Duplex	4	4(1WC)	385	181.5(39+76.5+66)	10	193.5	Yes(Private)	Additional Charge	€1,500,000
GF2	G/F-1st	Duplex	3	3	240	123(67+56)	9	108	Yes(Private)	Additional Charge	Reserved
B1	2nd	Apartment	1	1	62	45	17	Communal	Communal	Additional Charge	Reserved
B2	2nd	Apartment	2	2	108.5	82	26.5	Communal	Communal	Additional Charge	Reserved
B3	2nd	Apartment	1	1	61	43	18	Communal	Communal	Additional Charge	Reserved
C1	3rd	Apartment	2	2(1WC)	123.5	86	37.5	Communal	Communal	Additional Charge	Reserved
C2	3rd	Apartment	2	2	108.5	82	26.5	Communal	Communal	Additional Charge	Reserved
DE1	4th-5th	Duplex	3	3(1WC)	235.5	135(100+35)	28	72.5	Yes(Private)	Additional Charge	Reserved
D2	4th	Apartment	2	2	108.5	82	26.5	Communal	Communal	Additional Charge	Reserved

* All the above floor areas are subject to verification following completion. Purchasers must therefore rely on their own inspection to verify any information provided. All dimensions are within + or -5%

*Transfer Tax 3.09%

TRUE TO
L I V I N G SPACES

