



# Natura Suites



# Welcome to Pallini

Pallini, one of the most enchanting neighborhoods in Attica, uniquely combines natural beauty with urban development. Located just a short distance from the center of Athens, it offers the tranquility and comfort that residents seek. The tree-lined streets, gardens, and squares create a welcoming environment, making it ideal for families and individuals wishing to enjoy a more serene pace.

## **A Community that Feels Like Home**

Pallini is more than just a location; it's a thriving community where neighbors become friends. The neighborhood boasts excellent infrastructure, including schools (Greek-German School, Pierce - The American College of Greece, Campion International School, Costeas Geitonas, I. M. Panagiotopoulos School), medical facilities, and shopping centers (*most notably the Designer Outlet and the Smart Park*). The warmth and camaraderie among residents foster a sense of belonging that is hard to find elsewhere. With local markets, cafés, and restaurants that showcase the flavors of Greek cuisine, you'll find everything you need within walking distance.



### **Nature at Your Doorstep**

For those who value outdoor activities, Pallini is a dream come true. The area is surrounded by beautiful parks and hiking trails, perfect for weekend adventures or evening strolls. It lies in a plain between the mountains Penteliko and Hymettus, whether you enjoy hiking, jogging, or simply basking in nature's beauty, the lush landscapes are right at your doorstep. Moreover, the proximity to stunning beaches of the Saronic Gulf, ensures you can soak up the sun and enjoy a refreshing dip in the sea whenever you desire.

### **Unmatched Accessibility**

One of Pallini's most compelling features is its exceptional accessibility. The neighborhood is well-connected to the greater Athens area via public transport (commuter train, Metro, and buses) and major roadways, allowing easy commutes to work, school, or leisure activities. It is only 14 km east of Athens city center. Whether heading to the bustling city center or exploring the breathtaking coastline, your journey will be seamless. This connectivity enhances the convenience of living in Pallini, allowing you to enjoy all that the region has to offer.

### **Investment in Your Future**

Investing in property in Pallini is not just about buying an apartment; it's about investing in your lifestyle and future. The real estate market in Pallini is thriving, making it a smart choice for both new homeowners and investors. As the demand for quality living spaces continues to rise, the value of your property is likely to increase over time. This means that your investment today will yield dividends for years to come.



# Natura Suites

Our Project in Pallini is designed to meet diverse needs and tastes. Whether you're looking for a cozy one-bedroom or a spacious family home, we have options that cater to every lifestyle. Each apartment boasts modern amenities, open layouts, and exquisite finishes, ensuring that your living space is both comfortable and stylish. Imagine coming home to a space that reflects your personality and makes you feel truly at ease.

**Tailored Living Spaces Just for You!**

**3 floors**

---

**14 Apartments**

47.28 - 94.11 m<sup>2</sup>

---

**883.26 total m<sup>2</sup>/building surface**

# Points of interest





# The apartments

## GROUND FLOOR

GF1	83.39 m <sup>2</sup>
GF2	96.01 m <sup>2</sup>
GF3	94.11 m <sup>2</sup>
GF4	67.11 m <sup>2</sup>

## 1<sup>ST</sup> FLOOR

A1	52.69 m <sup>2</sup>
A2	52.65 m <sup>2</sup>
A3	47.75 m <sup>2</sup>
A4	47.28 m <sup>2</sup>
A5	70.95 m <sup>2</sup>

## 2<sup>ND</sup> FLOOR

B1	52.69 m <sup>2</sup>
B2	52.65 m <sup>2</sup>
B3	47.75 m <sup>2</sup>
B4	47.28 m <sup>2</sup>
B5	70.95 m <sup>2</sup>















# Ground Floor

## Loft Apt GF1

Loft 18.75 m<sup>2</sup>



<b>Bedrooms</b>	2
<b>Bathroom</b>	1
<b>Living Area</b>	83.39 m <sup>2</sup>
<b>Covered yard</b>	13.85 m <sup>2</sup>

+ parking spot

Marathonos Ave.



walkwayz

Ground floor 64.64 m<sup>2</sup>



### Fully furnished and equipped:

- Double bed
- Night-tables
- Closet
- Sofa
- Coffee table
- Dining table with chairs
- TV
- Built-in oven
- Set of ceramic hobs
- Kitchen hood
- Sink
- Fridge
- Washing machine
- Bathroom equipment (toilet + basin + shower cabin)
- A/C

# Ground Floor

## Loft Apt GF2

Loft 26.43 m<sup>2</sup>



**Bedrooms** 2

**Bathrooms** 2

**Living Area** 96.01 m<sup>2</sup>

**Covered yard** 9.82 m<sup>2</sup>

+ parking spot

Marathonos Ave.



Ground floor 69.58 m<sup>2</sup>



### Fully furnished and equipped:

- Double bed
- Night-tables
- Closet
- Sofa
- Coffee table
- Dining table with chairs
- TV
- Built-in oven
- Set of ceramic hobs
- Kitchen hood
- Sink
- Fridge
- Washing machine
- Bathroom equipment (toilet + basin + shower cabin)
- A/C

# Ground Floor

## Loft Apt GF3

Loft 25.89 m<sup>2</sup>



<b>Bedrooms</b>	2
<b>Bathrooms</b>	2
<b>Living Area</b>	94.11 m <sup>2</sup>
<b>Covered yard</b>	9.80 m <sup>2</sup>

+ parking spot

Marathonos Ave.



Ground floor 68.22 m<sup>2</sup>



### Fully furnished and equipped:

- Double bed
- Night-tables
- Closet
- Sofa
- Coffee table
- Dining table with chairs
- TV
- Built-in oven
- Set of ceramic hobs
- Kitchen hood
- Sink
- Fridge
- Washing machine
- Bathroom equipment (toilet + basin + shower cabin)
- A/C



# Ground Floor

## Loft Apt GF4

Loft 18.00 m<sup>2</sup>



<b>Bedrooms</b>	2
<b>Bathrooms</b>	2
<b>Living Area</b>	67.11 m <sup>2</sup>
<b>Covered yard</b>	8.60 m <sup>2</sup>

+ parking spot

Marathonos Ave.



Ground floor 49.11 m<sup>2</sup>



### Fully furnished and equipped:

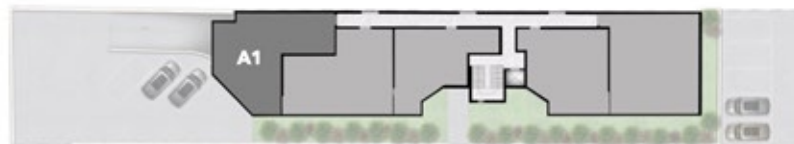
- Double bed
- Night-tables
- Closet
- Sofa
- Coffee table
- Dining table with chairs
- TV
- Built-in oven
- Set of ceramic hobs
- Kitchen hood
- Sink
- Fridge
- Washing machine
- Bathroom equipment (toilet + basin + shower cabin)
- A/C



# 1st Floor

## Apt A1

Marathonos Ave.



walkwayz



**Bedroom** 1

**Bathroom** 1

**Living Area** 52.69 m<sup>2</sup>

**Balcony** 21.75 m<sup>2</sup>

+ parking spot

### Fully furnished and equipped:

- Double bed
- Night-tables
- Closet
- Sofa
- Coffee table
- Dining table with chairs
- TV
- Built-in oven
- Set of ceramic hobs
- Kitchen hood
- Sink
- Fridge
- Washing machine
- Bathroom equipment (toilet + basin + shower cabin)
- A/C



# 1st Floor

## Apt A2

Marathonos Ave.



walkway



**Bedroom** 1

**Bathroom** 1

**Living Area** 52.65 m<sup>2</sup>

**Balcony** 20.37 m<sup>2</sup>

+ parking spot

### Fully furnished and equipped:

- Double bed
- Night-tables
- Closet
- Sofa
- Coffee table
- Dining table with chairs
- TV
- Built-in oven
- Set of ceramic hobs
- Kitchen hood
- Sink
- Fridge
- Washing machine
- Bathroom equipment (toilet + basin + shower cabin)
- A/C



# 1st Floor

Apt A3

Marathonos Ave.



walkwayz



## Studio Apartment

Bathroom 1

Living Area 47.75 m<sup>2</sup>

Balcony 8.30 m<sup>2</sup>

+ parking spot  
+ storage room

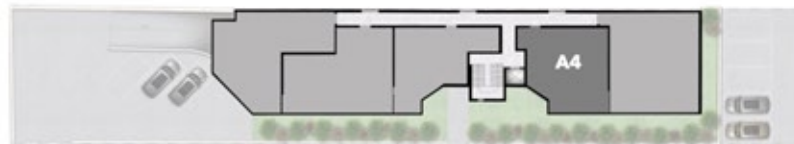
## Fully furnished and equipped:

- Double bed
- Night-tables
- Closet
- Sofa
- Coffee table
- Dining table with chairs
- TV
- Built-in oven
- Set of ceramic hobs
- Kitchen hood
- Sink
- Fridge
- Washing machine
- Bathroom equipment (toilet + basin + shower cabin)
- A/C

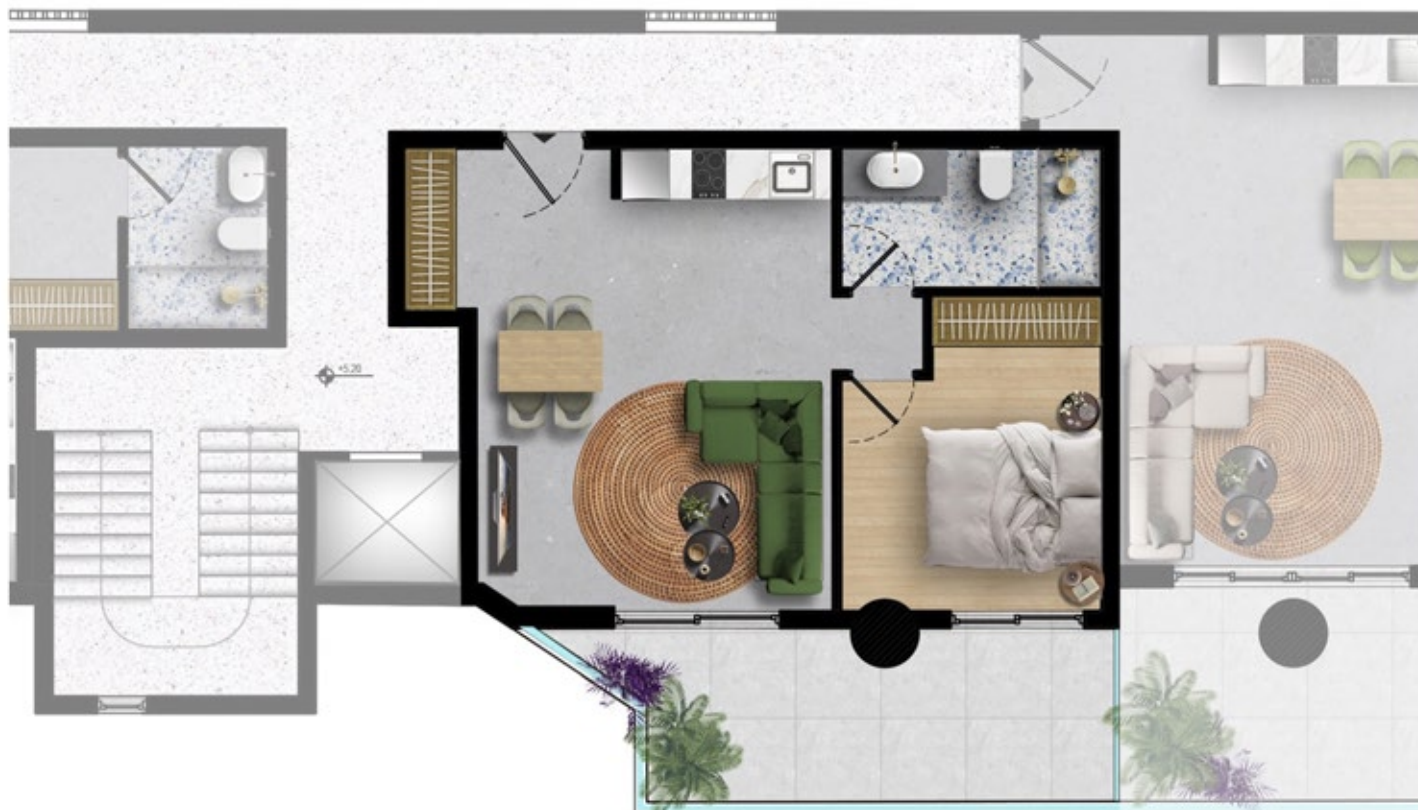
# 1st Floor

Apt A4

Marathonos Ave.



walkwayz



**Bedroom** 1

**Bathroom** 1

**Living Area** 47.28 m<sup>2</sup>

**Balcony** 17.20 m<sup>2</sup>

+ parking spot  
+ storage room

## Fully furnished and equipped:

- Double bed
- Night-tables
- Closet
- Sofa
- Coffee table
- Dining table with chairs
- TV
- Built-in oven
- Set of ceramic hobs
- Kitchen hood
- Sink
- Fridge
- Washing machine
- Bathroom equipment (toilet + basin + shower cabin)
- A/C



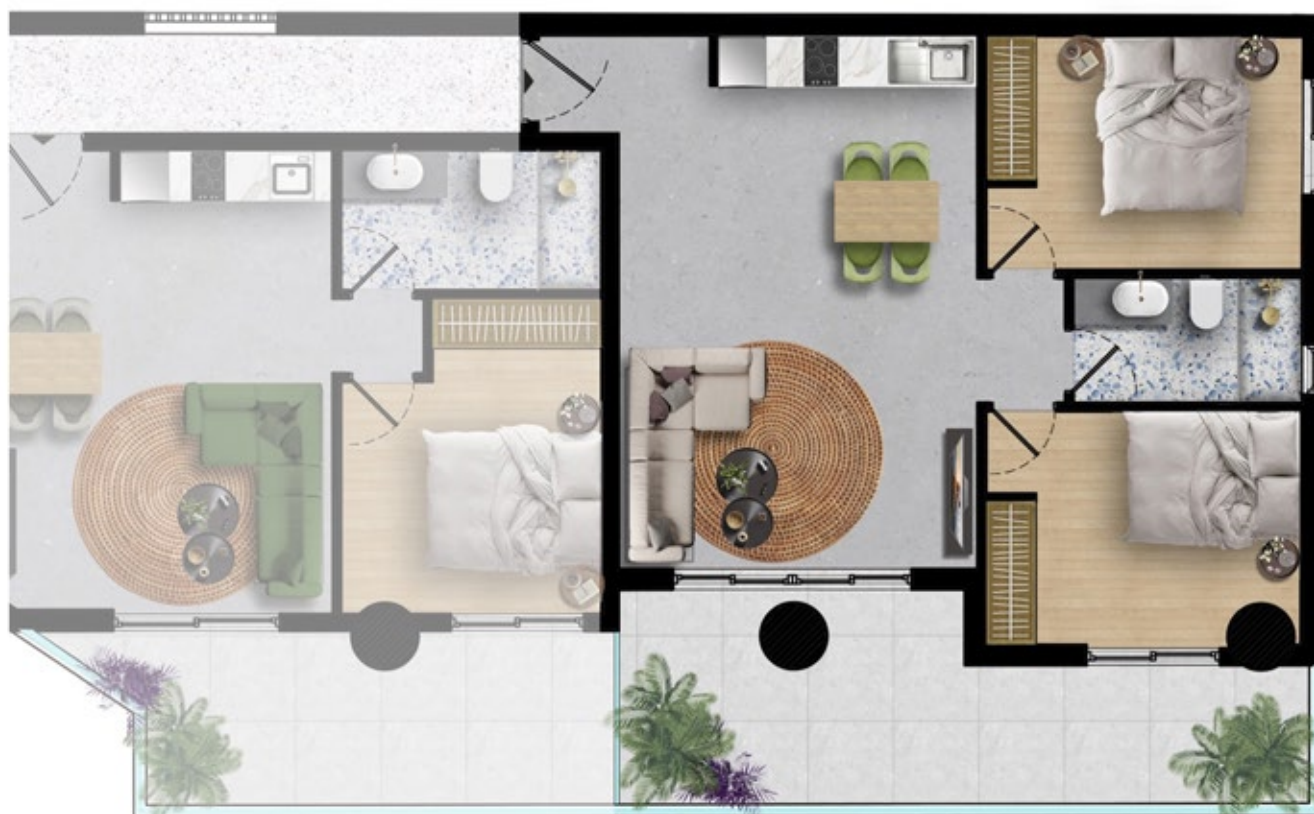
# 1st Floor

Apt A5

Marathonos Ave.



walkwayz



**Bedrooms** 2

**Bathroom** 1

**Living Area** 70.95 m<sup>2</sup>

**Balcony** 12.45 m<sup>2</sup>

+ parking spot  
+ storage room

## Fully furnished and equipped:

- Double bed
- Night-tables
- Closet
- Sofa
- Coffee table
- Dining table with chairs
- TV
- Built-in oven
- Set of ceramic hobs
- Kitchen hood
- Sink
- Fridge
- Washing machine
- Bathroom equipment (toilet + basin + shower cabin)
- A/C



# 2<sup>nd</sup> Floor

## Apt B1

Marathonos Ave.



walkwayz



**Bedroom** 1

**Bathroom** 1

**Living Area** 52.69 m<sup>2</sup>

**Balcony** 21.75 m<sup>2</sup>

+ parking spot

### Fully furnished and equipped:

- Double bed
- Night-tables
- Closet
- Sofa
- Coffee table
- Dining table with chairs
- TV
- Built-in oven
- Set of ceramic hobs
- Kitchen hood
- Sink
- Fridge
- Washing machine
- Bathroom equipment (toilet + basin + shower cabin)
- A/C



# 2<sup>nd</sup> Floor

Apt B2

Marathonos Ave.



walkwayz



**Bedroom** 1

**Bathroom** 1

**Living Area** 52.65 m<sup>2</sup>

**Balcony** 20.37 m<sup>2</sup>

+ parking spot

### Fully furnished and equipped:

- Double bed
- Night-tables
- Closet
- Sofa
- Coffee table
- Dining table with chairs
- TV
- Built-in oven
- Set of ceramic hobs
- Kitchen hood
- Sink
- Fridge
- Washing machine
- Bathroom equipment (toilet + basin + shower cabin)
- A/C



# 2<sup>nd</sup> Floor

Apt B3

Marathonos Ave.



walkwayz



## Studio Apartment

<b>Bathroom</b>	1
<b>Living Area</b>	47.75 m <sup>2</sup>
<b>Balcony</b>	8.30 m <sup>2</sup>

- + parking spot
- + storage room

## Fully furnished and equipped:

- Double bed
- Night-tables
- Closet
- Sofa
- Coffee table
- Dining table with chairs
- TV
- Built-in oven
- Set of ceramic hobs
- Kitchen hood
- Sink
- Fridge
- Washing machine
- Bathroom equipment (toilet + basin + shower cabin)
- A/C





# 2<sup>nd</sup> Floor

## Apt B4

Marathonos Ave.



walkwayz



**Bedroom** 1

**Bathroom** 1

**Living Area** 47.28 m<sup>2</sup>

**Balcony** 17.20 m<sup>2</sup>

+ parking spot  
+ storage room

### Fully furnished and equipped:

- Double bed
- Night-tables
- Closet
- Sofa
- Coffee table
- Dining table with chairs
- TV
- Built-in oven
- Set of ceramic hobs
- Kitchen hood
- Sink
- Fridge
- Washing machine
- Bathroom equipment (toilet + basin + shower cabin)
- A/C



# 2<sup>nd</sup> Floor

Apt B5

Marathonos Ave.



walkway



**Bedrooms** 2

**Bathroom** 1

**Living Area** 70.95 m<sup>2</sup>

**Balcony** 12.45 m<sup>2</sup>

+ parking spot  
+ storage room

### Fully furnished and equipped:

- Double bed
- Night-tables
- Closet
- Sofa
- Coffee table
- Dining table with chairs
- TV
- Built-in oven
- Set of ceramic hobs
- Kitchen hood
- Sink
- Fridge
- Washing machine
- Bathroom equipment (toilet + basin + shower cabin)
- A/C

# Parking Spots & Storages

Ground floor



Basement

